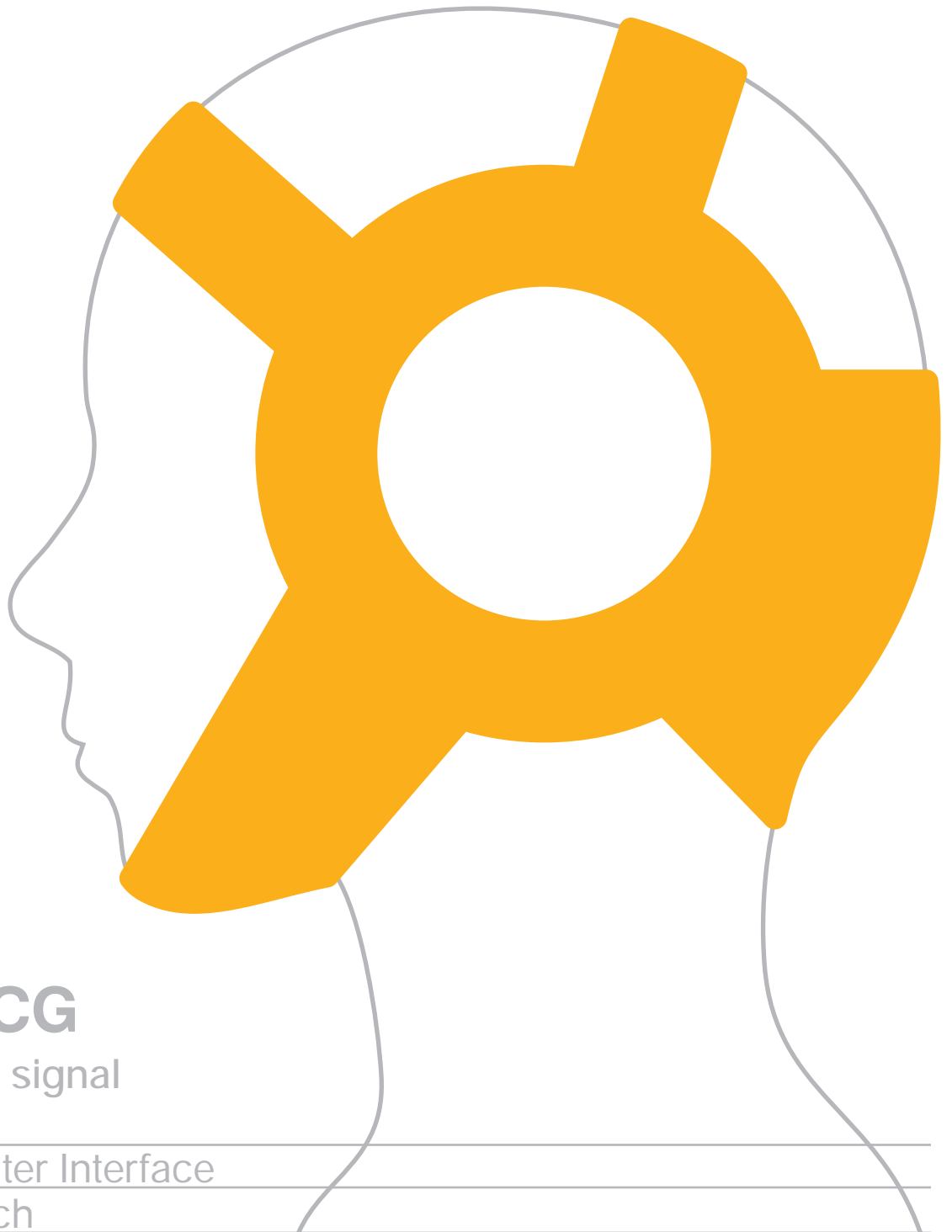


enobio^{NE®}

BRAINWAVES
MADE
SIMPLE



EEG /EOG/ECG

Mobile brain signal
sensing for:

- > Brain Computer Interface
- > Basic research
- > Medical application development
- > Neuromodulation
- > User affective state
- > Biometry

enobio

t Wireless communication

BMMPXT GPS NPCJMF EBUB SFDPSEJOH
BXBZ GSPN MBC PS DPOUSOMMFE
FOWJSPONFOUT

Number of channels:

4

Operating time:

IPVST

Input:

PPNQUBUJUBMT && (&
EJHJUBM TUSFBNJOH

Sampling:

4 T

Effective dynamic range:

CJUT

DC Offset:

VUPNBUJD PGGTFU DP
GPS FBDI DIBOOFM

Common mode rejection

Ratio: E #

t Active electrodes

UP SFEVDF FOWJSPONFOUBM OPJTF

Bandwidth:

UP);

t Modular design

BMMPXT VTFST UP DVTUPNIF BTJQHMF
TZTUFN GPS WBSJPVT BQQMIDBUJPOT

Wireless communication:

M&D

t Use wet or dry

Dimensions:

Y Y NN

t Easy Set-up

CoNCSJCFMVE ys UN

Weight:

H

t Flexible electrode placement

Bas FE 0 E UEA 0-10

ICPSA UP JOMysUN

